

PLANTING FIELDS  
FOUNDATION  
P.O. BOX 660, OYSTER BAY, NY 11771

NON-PROFIT ORG.  
U.S. POSTAGE  
**PAID**  
HUNTINGTON, N.Y.  
PERMIT NO. 14

# EVERGREEN

PLANTING FIELDS FOUNDATION / PLANTING FIELDS ARBORETUM, OYSTER BAY, NEW YORK FALL/WINTER 2015 -16 NEWSLETTER

## THE NEW SENSORY GARDEN AT PLANTING FIELDS OPENED JULY 9TH, 2015

*Story page 6*

*Dahlia Garden*



BILL BARASH



BOARD OF TRUSTEES  
OFFICERS

Michael D. Coe  
*Chairman*

Hal Davidson  
*President*

Sarah Coe  
*Vice President*

Peter Tilles  
*Vice President*

Peter Tiberio  
*Treasurer*

John Casaly  
*Secretary*

TRUSTEES  
G. Morgan Browne  
Hannah Burns  
Carol M. Canter  
Mary Ciullo  
Ronald F. Foley  
Robert Foschi  
Margaret Frere  
Richard W. Gibney  
Thomas J. Golon  
Constance Haydock  
Anne Coe Hayes\*  
Bruce Herlich  
David R. Holmes, Jr.  
Jeffrey Lee Moore  
Andrew F. Nevin  
Count Ernesto Vitetti\*  
Jennifer A. Wiggins  
\*Emeritus

Ex Officio  
Henry B. Joyce  
*Executive Director,  
Planting Fields Foundation*

Vincent A. Simeone  
*Director,  
Planting Fields Arboretum  
State Historic Park*



WE WARMLY WELCOME...  
NEW TRUSTEE TO PLANTING FIELDS FOUNDATION

THOMAS J. GOLON  
Thomas J. Golon is a graduate of SUNY Farmingdale and holds a degree in Auto Engineering as well as Arboriculture. He is the founder of Wonderland Tree Service and formed Wonderland Tree Care, Inc. in 1984 which became the first accredited tree care company on Long Island. Thomas has board affiliations with the Long Island Arboricultural Association, National Arborist Association, and the Tree Care Industry Association. He lives in Oyster Bay with his wife Janet and their two sons, Christopher and David. He is currently a board member of the Bailey Arboretum in Lattingtown.

On the front cover:  
Senator Carl Marcellino, Hal Davidson, Peter Tilles, Vincent Simeone, Richard Gibney, Susan Gordon Ryan, Wayne Horsley, Andy Beers, Assemblyman Charles Lavine, Comptroller Thomas DiNapoli, and Bryan Erwin.



FEATURED  
STORIES



6 THE NEW  
SENSORY GARDEN

On July 9th, 2015, Planting Fields Arboretum eagerly welcomed visitors to the new Sensory Garden and entrance pavilion



16 CELEBRATING  
DAHLIAS

The Paul Callahan Dahlia Garden at Planting Fields offers visitors the opportunity to see a magnificent collection of dahlias in an extraordinary range of colors and sizes.



22 THE CAMELLIA  
HOUSE

Originating in China and Japan, the camellia, or the Rose of Winter as it is sometimes known, was first introduced into sixteenth century Europe in the wake of Far East trade.

MESSAGE FROM THE EXECUTIVE DIRECTOR  
**DEAR MEMBERS**



The memories of spring and summer are fading fast but at Planting Fields we have a lot of wonderful events, especially concerts and musical theater in the park. Plaza Theatrical’s last performance in August was “West Side Story” which was a magnificent evening of music, songs and acting by a talented young cast. The Manor House exhibition “Heels and Wheels”, about the history of Barbie dolls and Matchbox cars, is a tremendous success and so its opening times have been extended through weekends in October.

For our Coe Hall luncheon lecture in June we had a 30 per cent increase in attendees over last year, and our speaker, Tim Barringer from Yale University gave an inspiring slide presentation about the links between British and American landscape painting and landscape gardens. The lecture was inside the house, but the luncheon was in the shade of the Scarlet Oak in the Cloister Garden on a perfect summer day.

Certainly the occasion that we were most proud of this summer was the July 9th opening of the New Sensory Garden and entrance pavilion. It was a time to celebrate a stunning new garden at Planting Fields which is one of the first places seen by visitors when they arrive at the park. The project was jointly paid for and planned by the Foundation and the Long Island regional department of New York State Office of Parks, Preservation and Recreation. The new garden is a wonder to behold and will improve with age as all the plants grow and mature. (see story p.?)

The restoration of the Camellia House is about to start, paid for with \$500,000 raised by the Foundation, half

from the Dormitory Authority of New York State, and half from the New York State Environmental Fund. The preservation work, mostly on masonry, will help secure the future of the building, which will be one hundred years old in 2017. Camellia Weekend, with music, singing and storytelling, will take place March 5th and 6th 2016.

Our Fall Family Festival is on the weekend of October 3rd and 4th. I will, as usual, be leading the Halloween costume parade as Merlin, two times each day, at noon and 3:30pm - please come in costume, children as well as adults. We will be doing two sleepover nights for children and their chaperones, on October 23rd, also in costume, and again for the holidays on December 19th. (Details on page ??) They are magical nights! Our annual holiday weekend will take place on December 12th and 13th.

In 2016, for the first time, we will be celebrating the Chinese New Year during the weekend of February 13th and 14th. Coe Hall will be brilliantly decorated with red and gold lanterns and there will be Kumquat trees and Peonies on display. We will feature an exhibition highlighting the best Chinese jades and works of art in the Foundation’s collection, and there will be performances and craft activities for children. I hope to see you there.

Warmest regards,

A handwritten signature in dark ink that reads "Henry B. Joyce".

Henry B. Joyce



# THE NEW SENSORY GARDEN

## AT PLANTING FIELDS

BY LILLY MCGURK,  
DEVELOPMENT OFFICER

**On July 9th, 2015, Planting Fields Arboretum eagerly welcomed visitors to the new Sensory Garden and entrance pavilion, after a two year project with New York State Parks, Recreation, Historic Preservation and the Planting Fields Foundation.**

The Sensory Garden was constructed on top of an old root cellar roof and transformed the cellar's flat roof into a 3,500 square foot accessible garden brimming with color, scents, textures, sounds and edible treats. The Coe family originally used this building to store their seasonal bounty which was produced on their farmstead and currently houses the heating and cooling system for the historic Main Greenhouse. The

location was chosen since the roof top is easily accessible and parallel to the existing pedestrian pathways and is close to the visitor's parking lot. The design takes inspiration from the past while incorporating new environmentally friendly building materials like the purple heart timber trellises that are weather and pest resistant, as well as modern design concepts that exceed the Americans with Disabilities Act





guidelines, all complementing the historic integrity of the other gardens and buildings throughout the park.

The Sensory Garden developed out of an experience that Planting Fields Foundation Trustee, Peter Tilles had when he visited the Chicago Botanical Gardens. After seeing how traditional outdoor gardens could be transformed into safe and accessible spaces for people of all ages and abilities to enjoy, he returned to Planting Fields and began to initiate plans for the Sensory Garden. Mr. Richard Gibney, RLA, another Trustee of Planting Fields Foundation, became involved with this project immediately and donated a great deal of his time and energy overseeing all phases of the project. It came to fruition through the combined efforts of the staff of New York State Parks, Recreation and Historic Preservation including

Long Island Regional Director, Mr. Wayne Horsely, Deputy Regional Director, Mr. George Gorman, Jr., Capital Facilities Regional Manager II, Mr. Scott Fish, P.E., Senior Architect, Mr. August Muff, R.A., Senior Architect, Mr. Scott Evan Gilbert, R.A., Director of Planting Fields Arboretum, Mr. Vincent Simeone and the entire construction crew led by Mr. Jeff Barwick of J. Barwick Landscape and Site Developers.

As soon as visitors enter the garden they are welcomed by an eye catching horticultural display of vibrant flowers, shrubs and grasses that rustle and dance with the passing breeze; an edible garden, which includes a variety of herbs, vegetables and textured and scented plants, inhabits this delightful space and overflowing containers tempt every passerby to touch, taste and smell them. The soothing sounds of

the water fountain feature enhance the tranquil setting along with the delicate sounds of wind chimes and song birds. Benches and walkways throughout the garden make finding a comfortable place to sit and relax easy for everyone. The addition of the new entrance pavilion now provides visitors with a clear starting point in which they can orient themselves to the gardens, programs and activities that are going on within the park on a daily basis.

Every Sunday in July and August our experienced outdoor educators led groups of children on various multi-sensory adventures throughout the garden, exploring their senses and inspiring their imaginations with art, music, crafts and tasty treats. Plants, butterflies and other beneficial insects that made their home within the sensory garden were on exhibit for all to see and explore.

BY ANDREA CRIVELLO,  
CURATORIAL ASSISTANT

The Foundation recently lent to decorative objects to two exhibitions at Long Island museums. The first was the Hecksher Museum's Poised Poses, that ran from April 25th-August 2nd, featuring European portraiture from the core of August Hecksher's collection. The installation looked to evoke the ambiance of a well-to-do estate in the late 19th and early 20th century. Curator, Lisa Chalif, reached out to Coe Hall for furnishings that would create such an effect. Objects borrowed included a Karadja rug, a William & Mary style gate-leg table and two high back needlepoint upholstered chairs. We were thrilled to be part of the Heckscher Museum's exhibition, where our furnishings harmonized beautifully with the portraits displayed.

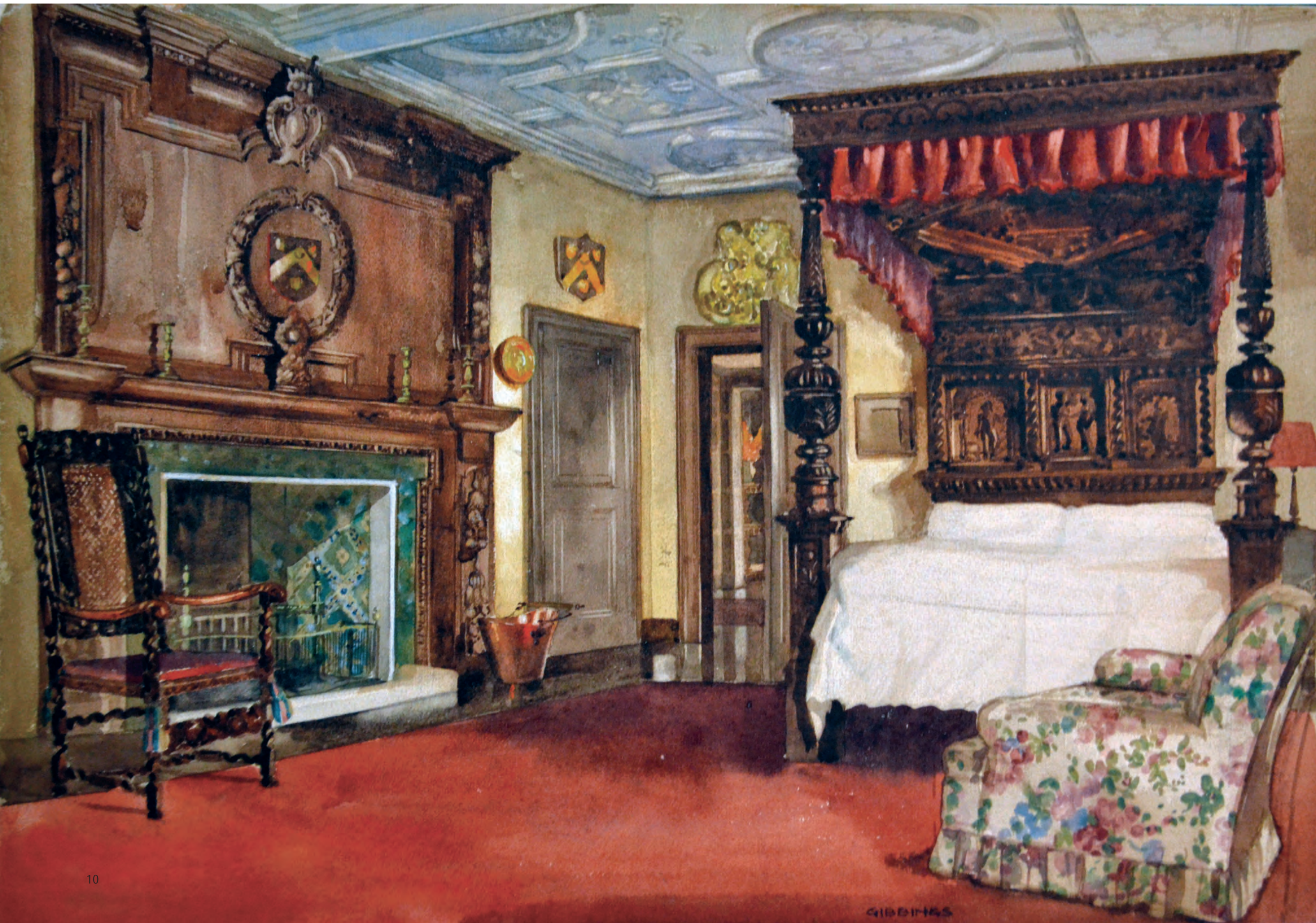
The second exhibition, Gilding the Coasts, is currently at the Long Island Museum through October 25th, 2015. The show features the collaborative efforts of art and design, vital to creating Long Island's magnificent estates in the late 19th and early 20th centuries. We are pleased that Coe Hall was chosen to be featured in the show. Objects on display include one of Mai Coe's Waterford candelabra, a painted side chair from the Tea House, a Daniel Marot style side chair, an oil painting by Everett Shinn, and a framed photograph of Dancer in Tutu with inscription from Everett Shinn to Mrs. Coe in 1914.

# ARTIFACT LOANS TO LOCAL EXHIBITIONS

BY PLANTING FIELDS FOUNDATION



# NEW ACQUISITION FOR COE HALL



BY HENRY B. JOYCE

The Foundation recently purchased a fine 1920s watercolor (15" x 21") by Terrance Harold Robsjohn-Gibbings, of a Charles Duveen-style Elizabethan bedroom (left). As a young man, Robsjohn-Gibbings, who went on to become a celebrated furniture designer and interior architect, worked for Charles Duveen's interior design company, Charles of London. This image would have been painted to show one of Duveen's clients how a newly commissioned bedroom would look when finished.

Last year we borrowed two similar images for our exhibition about Duveen's interior design work at Coe Hall in the early 1920s. These watercolors rarely come on the market and it is the kind of picture that is directly relevant to the history of Duveen's rooms at Planting Fields. Mr. Coe's bedroom, currently being restored, is similar in style to this watercolor proposal for a new bedroom for an unidentified client. The work is currently on display in Mr. Coe's bedroom. British born Robsjohn-Gibbings (Gibby to his friends) relocated from London to New York City in 1937, where he set up his own interior design business. His clients included Otto Kahn, Elizabeth Arden and Doris Duke. He became well known for his furniture designed in the style of Greek tables and chairs, which he copied from ancient Greek vases in the British Museum.

COE HALL OPEN FOR THE SEASON – MARCH 28TH – SEPTEMBER 30TH / 11:30AM-3:30PM DAILY / WEEKENDS ONLY IN OCTOBER  
SELF-GUIDED VISITS - \$5.00 FOR NON-MEMBERS/FREE FOR MEMBERS & CHILDREN UNDER 12 / PARK OPEN DAILY 9:00AM-5:00PM

## CALENDAR OF EVENTS FALL & WINTER 2015

FOR MORE INFORMATION  
please contact Jennifer Lavella  
at (516)922-8678  
or [jlavella@plantingfields.org](mailto:jlavella@plantingfields.org)



### OCTOBER 2015

SATURDAY, OCTOBER 3RD & SUNDAY, OCTOBER 4TH  
**Fall Family Festival Weekend**

11:00am - 5:00pm, rain or shine | \$20 per vehicle

Halloween trick or treat and costume parade, live music with Ready in Ten and River of Dreams (Billy Joel Tribute Band), jumbo garden games, pumpkins for sale, pony rides, potato sack races, watercolor demonstrations, and bounce house. Enjoy food and beer tastings of autumn in the Hay Barn Courtyard, provided by COFFEED INC., dahlia garden open and Coe Hall Open. Contact Jennifer Lavella (516) 922-8678 or [jlavella@plantingfields.org](mailto:jlavella@plantingfields.org) for more information.

SUNDAY, OCTOBER 18TH  
**Murder, Madness, and Poe**

2:00pm at Coe Hall | Free with \$5 admission to Coe Hall  
No reservations necessary | \$8 parking fee at main gate

Haunting tales and poems from Edgar Allen Poe's best known works with musical interludes, performed by Michael Bertolini as Poe, the 19th century master of the macabre. Written and directed by David Houston. Come...if you dare! For more information contact Jennifer Lavella at (516) 922-8678 or [jlavella@plantingfields.org](mailto:jlavella@plantingfields.org)

FRIDAY, OCTOBER 23RD  
**A Night at the Mansion: Sleepover at Coe Hall**

7:00pm (Friday evening) – 8:00am (Saturday morning)  
\$40 Non-Members | \$30 Members

Join us for an evening of fun and mystery! Enjoy an ice cream bar, flashlight tour, late night movie (Pirates of the Caribbean) and then its lights out for a sleepover at Coe Hall. Bagels and juice will be served on Saturday morning. Children must have chaperone and must be 8-12 years of age. For reservations contact Michelle Benes (516) 922-8682. Space is limited.



### DECEMBER 2015

SATURDAY DECEMBER 5TH  
AT 7:00 PM

Planting Fields Foundation's

### *Deck the Halls*

Cocktails, dinner, dancing and silent auction will be part of this annual special evening to celebrate the holidays at Planting Fields. For details, reservations, and sponsorship opportunities, contact Jennifer Lavella (516) 922-8678 or [jlavella@plantingfields.org](mailto:jlavella@plantingfields.org)



FRIDAY, DECEMBER 11TH  
**11th Annual Tree Lighting and Visit from Santa**

Free Admission! Free Activities! No Parking Fee!  
6:00pm – 8:00pm | Tree will be lit at 6:00pm sharp!

Delight in all kinds of holiday excitement at Planting Fields including caroling by the Barber Shop Quartet, Hot Cocoa and refreshments at the Hay Barn/Visitor Center by COFFEED INC., Coe Hall decorated for the season will be open for self-guided visits. Visit with Santa until 7:30pm in the Hay Barn! For more information, contact Jennifer Lavella (516) 922-8678.

SATURDAY, DECEMBER 12TH AND SUNDAY, DECEMBER 13TH  
**Holiday Weekend at Coe Hall**

\$10 Admission | FREE for members & children under 12 | 11:00am – 4:00pm, both days

Experience Coe Hall decorated in holiday style. See Santa, make an old-fashioned gingerbread house, listen to the wonderful Madrigal Singers, and enjoy the theatrical performance of A Fairy Tale Winter by Plaza Theatrical Productions at 2:30pm, in the Great Hall. Experience a thrilling adventure and the magic of the holidays through the eyes of your favorite fairy tale characters in A Fairy Tale Winter! For more information, contact Jennifer Lavella (516) 922-8678.

**Gingerbread House Making Sessions** (\$5 per child additional fee)

11:00am – 4:00pm at Coe Hall (in the former servants' dining room)  
\*Every hour on the hour, 10 children per session, \$5 per child, first come, first served!

Cookies and juice are available while you make your own gingerbread house.

**Poinsettia & Cyclamen Display in the Main Greenhouse**

10:00am – 4:00pm Daily in the Main Greenhouse



SATURDAY, DECEMBER 19TH  
**A Night at the Mansion:  
Sleepover at Coe Hall**

7:00pm (Saturday evening) –  
8:00am (Sunday morning) | \$40  
Non-Members / \$30 Members

Join us for an evening of holiday fun and mystery inside of Coe Hall! Enjoy an ice cream bar, flashlight tour, late night movie (Home Alone) and then its lights out for a sleepover at Coe Hall. Bagels and juice will be served on Sunday morning. Children must have chaperone and must be 8-12 years of age. For reservations contact Michelle Benes (516) 922-8682. Space is limited.



SATURDAY  
AND SUNDAY,  
JAN. 23RD AND JAN. 24TH  
**Paradise at Planting  
Fields Weekend**  
12:00pm – 4:00pm rain or shine

Come and enjoy a touch of paradise at Planting Fields in our Main Greenhouse, featuring live steel drum music, puppet shows, caricaturist, and crafts for children. Coe Hall will be open, featuring live music by Jack Kohl, \$5 admission fee. Call Jennifer at (516) 922-8678 for more information.

SATURDAY  
AND SUNDAY,  
FEB. 13TH AND 14TH  
**Celebrate the Chinese  
New Year at Coe Hall**

\$10 Admission Fee  
Members and children under 12 FREE  
11:00am – 4:00pm, both days

Come to Coe Hall to celebrate the Chinese lunar calendar. In China the celebrations continues for 16 days. On Saturday and Sunday February 13th and 14th the mansion will be brilliantly decorated with red lanterns and as 2016 is the year of the monkey, their images will be prominent. There will be Kumquat trees and peonies on display. We will feature an exhibition highlighting the best Chinese jades and works of art in the Foundation's collection. There will be performances and craft activities for children. New Year paintings will be hung and there will be traditional paper cut outs on windows depicting plants and animals. Enjoy craft activities, music and eat sweet rice cakes and oranges. For more information, contact Jennifer Lavella (516) 922-8678.



## CALENDAR OF EVENTS WINTER & SPRING 2016

### *Camellia* HOUSE WEEKEND



SATURDAY, MARCH 5TH AND SUNDAY MARCH 6TH  
**Camellia House Weekend**

10:00am – 4:00pm I rain or shine

Come and enjoy our Annual Camellia House weekend featuring live music, walking tours of the Camellia House, Mad Hatter's Tea Party and activities for children. Camellia will be available for purchase by Martin Viette Nurseries. Coe Hall is open for self-guided visits. For more information, contact Jennifer Lavella (516) 922-8678.



SATURDAY AND SUNDAY,  
APRIL 23RD AND 24TH  
**Arbor Day Family Festival**

10:00am – 5:00pm I \$20 per vehicle  
Rain or Shine

Live music with Peat Moss & the Fertilizers, performances, children's tree climb, face painting, circus acts, and lots of activities for children of all ages to enjoy! For more information, contact Jennifer Lavella (516) 922-8678.

# CELEBRATING DAHLIAS

## AT PLANTING FIELDS

BY LILLY MCGURK,  
DEVELOPMENT OFFICER

**The Paul Callahan Dahlia Garden at Planting Fields offers visitors the opportunity to see a magnificent collection of dahlias in an extraordinary range of colors and sizes.**

During the blooming season, July through October, vibrant flowers capture your attention from yards away. The Mid Island Dahlia Society oversees the garden and meets every Wednesday between 9am and 11am seasonally. Society members are responsible for the garden's upkeep and also provide information to visitors interested in adding dahlias to their home garden collection.

Dahlias are the perfect summer/fall flower and can be found in a wide variety of colors, shapes and sizes. It is believed that the history of cultivation began in 1789 following their introduction into Spain from Central America. Today's garden variety dahlias have a much more complex petal structure than the wild dahlia. They are classified as members of the Asteraceae or alternatively, compositae family, which is a group of dictyledonous plants which also include zinnia, chrysanthemum, sunflower, aster, and daisy. Dahlia flower size can be as small as 2 inches or as large as 12 inches (dinner plate) with leafy stems. Dahlias grow in climates that do not experience frost and subzero temperatures, however, given the tuberous nature of the plant they

can survive periods of dormancy which allows gardeners to lift them from the ground, before a frost, and store them for the winter. Dahlias perform best in sunny, well-watered, free draining soils, and some of the taller cultivars require staking as they grow. To encourage new flowers to grow, all dahlias need deadheading regularly.

This year marks an important milestone for the American Dahlia Society which was founded in 1915 and is celebrating its centennial along with the Mid Island Dahlia Society which is celebrating its 50th anniversary. Both organizations promote and support the growing, showing and enjoyment of Dahlias in North America.





NEW ON EXHIBITION IN THE  
WRITING ROOM AT COE HALL

# NINETEENTH CENTURY PERSIAN, TURKISH AND INDIAN DAGGERS

At his death in 1985, Robert D. Coe, the diplomat son of Coe Hall's builder, William R. Coe, bequeathed eight highly decorated daggers and their sheaths to Planting Fields Foundation. They are embellished with agate, jade, ivory, gold, silver, diamonds, emeralds, and rubies. They have been in storage until they were added to the writing room where they will remain on long-term exhibition.



## PLANTING FIELDS PROJECTS

### NEW VISITORS' PARKING THE WEST LOT

The renovation of the west lot is currently underway. New York State Department of Parks, Recreation and Historic Preservation was awarded \$700,000 in grant funds from the Green Innovation Grant Program for the installation of pervious pavement, bio retention, bio filters and a wetland area in the visitors' parking facility.

The project will incorporate pervious pavement and a bio retention system for storm water management. It will also provide safe pedestrian routes with grading and parking spaces that meet the American with

Disabilities Act standards, a visitor drop off area and improved traffic circulation. The storm water will be directed to flow into an infiltrated system below the parking area. This area will contain a pond, created wetlands, and a series of bio filters that will improve the water quality of the storm water that flows from the surrounding paved areas. The pond and wetland will be overlooked by the new Sensory Garden allowing visitors to experience a new type of ecosystem and garden. It will highlight native plants that are not currently featured at the arboretum.

### THE MANOR HOUSE RESTORATION PROJECT

The Manor House was built in 1956 and was designed by Eric Gugler. He is well known for redesigning interiors of the White House for former President Franklin Delano Roosevelt.

The Manor House has never received significant restoration and the building's flat roof requires frequent maintenance. Over the years many patches and repairs have been made in an attempt to create a proper seal from the external elements but due to its age the entire roof system

needs to be replaced. Interior damage to the ceiling, walls and floors have occurred due to water infiltration. Currently, the New York State Office of Parks, Recreation and Historic Preservation is replacing both of the flat modified bitumen roof structures as well as exterior wooden moldings and concealed gutters which have badly decayed. In August this year New York State Office of Parks, Recreation and Historic Preservation also repaired the brick entrance way to the building.

### RECENT ROOF AND GUTTER REPAIRS AT COE HALL

The annual inspection of roofs and gutters this summer led to extensive repairs on the flat metal roof of the den where during the last several winters there has been considerable build-up of snow which has to be shoveled off. Now all the metal seams have been checked and sealed by Loth Roofing and Siding who specialize in sheet metal work. The firm also repaired and patched a group of original 1920 lead catch basins or troughs, high up under the eaves of the roofs (right). These had been corroded by nearly a hundred years of wear and needed to be cleaned and carefully restored.



## BEHIND THE SCENES AT COE HALL

### TV'S ROYAL PAINS SUMMER FILM SHOOT

The cast and crew of Royal Pains, a T.V. series in it's 7th season on USA took over Coe Hall to shoot scenes for an episode that is anticipated to air in 2016. Over a three day period from 6am-7pm, the crew dressed the sets for filming, filmed, and then wrapped scenes for the show.

The premise of the episode involves a character who is a hoarder of antiques. Coe Hall's Gallery, and Reception Room were used and transformed to create exciting rooms where dozens of rented props and artifacts were brought in. Coe Hall furnishings and objects were removed from the rooms for protection.





# THE CAMELLIA HOUSE

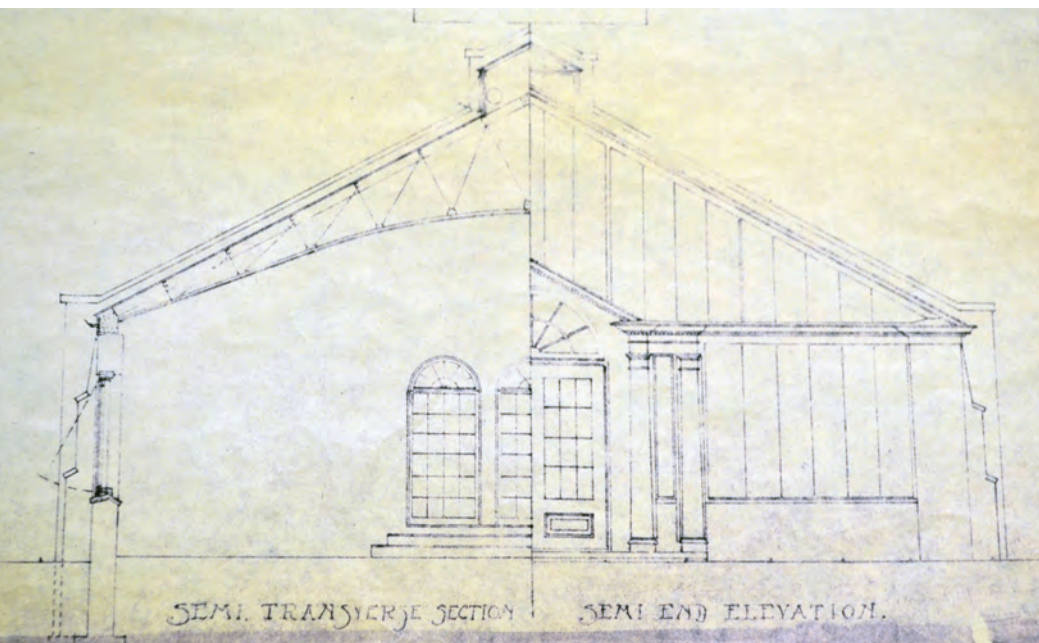
## AT PLANTING FIELDS

**Originating in China and Japan, the camellia, or the Rose of Winter as it is sometimes known, was first introduced into sixteenth century Europe in the wake of Far East trade.**

In 1753, when camellias were still rare, Carl Linneaus named them to honor the scientific work of George Joseph Kamel, who was an experimental pharmacist, admired for his work in the Philippnes during the late seventeenth century.

There was once a widespread notion that camellias were not hardy and so in the eighteenth century when British aristocrats were growing them (and paying for expeditions to China to collect new varieties), they commissioned elegant heated





camellia houses to be built on the grounds of their country houses, usually designed by distinguished architects. Many survived even after they were abandoned, when it was realized that camellias were perfectly hardy. One of the finest greenhouses was built at Woburn Abbey in Bedfordshire, designed about 1800 by Henry Holland for the 5th Duke of Bedford. The building is now a sculpture gallery. Another, at Chiswick House, outside of London, about the same time, has recently been restored and still holds many very old camellias. They can be seen in March each year when they are in full flower and the greenhouse has regular public visiting hours.

In 1916 when British born William R. Coe and his wife, Mai bought their original collection of camellias from the English nurseryman, John Waterer and Sons, they had the Planting Fields Camellia House built in much the same style as English greenhouses of a hundred years



before. Ironically, during and after World War I many English greenhouses, especially large ones, because they were so expensive to heat, were demolished. In the U.S. it was the great economic crash in 1929 that augured the end of great estate building, and so the Coe's Camellia House was one of the last huge private greenhouses to be built—the end of a long tradition. Now, over two hundred years later, the Camellia House is a rare historical survivor, especially in the U.S., and it is therefore important that it be preserved.

The construction of the Camellia House was part of the Coe's plan to transform Planting Fields into a sophisticated and glamorous estate to which they could escape from their busy lives in New York City, their principal place of residence. They were socially ambitious and therefore wanted a place where they could entertain in style and be close to their clubs on the North Shore, where they socialized and pursued sports.

For their plans at Planting Fields the Coes hired the Boston-based architect Guy Lowell (1870- 1927), and it was he who oversaw the design and construction of the center range of the Camellia House (Lowell's east and west ranges were added in 1922). The greenhouse was manufactured by the William H. Lutton Company of Jersey City, New Jersey. Lutton, who founded his business in 1900, was, in his day, considered the "foremost authority on the construction and heating of greenhouses". The glass in the Camellia House was originally held in place by wood, clearheart cypress, which is grown in water covered swamps in the South which as Lutton stated is "the one wood best fitted by nature to resist decay where heat and extreme moisture abound". The greenhouse has been completely re-glazed at least twice during its lifetime. Once, in the late 1940s, when the original cypress wood was encased in aluminum, and most recently in 1982. Re-glazing has also taken place on an as-needed basis over the last, nearly one hundred years as the result of storm and wind damage. Most recently a huge section of the east range was



replaced after a tree fell on it in 2013 during tropical storm Sandy.

Over the last five years the Foundation has won two grant awards for the Camellia House restoration, one for \$250,000 from the New York State Dormitory Authority and one from the New York State Environmental Fund, also for \$250,000. These funds will be used, beginning this fall, on the repair, mainly of masonry. Previous restorations have focused on the steel armature and glazing. Now it is the north wall above the furnace area and brick piers that need work. The masonry walls are built with

oversized and over-fired bricks. They were deliberately fired at high temperatures so that the clay would crack and blister. This gave the brick an immediate look of age and patina—a picturesque quality that Grosvenor Atterbury had used in the construction of the original 1906 mansion, aiming for the same visual effect, as though Planting Fields was an old estate of indiscernible age, reminiscent of European Renaissance villas with garden buildings. Guy Lowell used the same newly made, but old looking brick, but while charming and rustic, the deliberately induced fissures in the bricks make them more porous than regular ones, and therefore the constant fluctuations in humidity and temperature of the greenhouse has caused them to deteriorate more rapidly than more regular smooth surfaced bricks. The restoration work will soon begin.



**In 2016 our Camellia House weekend, with the plants in full flower, is March 5th and 6th there will be music and a Mad Hatter's tea party for children (tea is made from camellia leaves) along with craft activities.**

# MUSIC AT THE MANSION

FALL/  
WINTER  
**CONCERT  
SERIES**  
2015 - 2016

PRESENTED BY PLANTING FIELDS FOUNDATION



Enjoy a  
complimentary  
glass of wine  
at every  
concert

**Friday Evening Shows 6:30 pm at Coe Hall**  
PLANTING FIELDS ARBORETUM STATE HISTORIC PARK

FRIDAY, OCTOBER 16TH, 2015  
AT 6:30 PM

## The Smoke Rings

The Smoke Rings evoke the elegance and charm of the Swing Era. Anchored by the unique vocals of Sarah King, the group specializes in songs from *The Great American Song Book*. Since 2010, The Smoke Rings have played to huge crowds at festivals as well as more intimate settings at private parties. For the past four years the band has been performing weekly at the iconic Top of The Standard—aka "The Boom Boom Room"—on the top floor of New York's storied and luxurious Standard Hotel. Furthermore, you might recognize Sarah from her role as Catherine Gray in the popular Off-Broadway production, *Sleep No More*.

WINE FOR THIS CONCERT GENEROUSLY  
DONATED BY GREENVALE GRAPES



Music at the Mansion Fall Winter Concert Series Music at the Mansion Fall Winter Concert Series Music at the Mansion



FRIDAY, NOVEMBER 13TH, 2015  
AT 6:30 PM

## Daniel Garcia Trio

Daniel Garcia Trio, which consists of two Spanish/Flamenco/Classical guitarists and a percussionist, is among the most requested ensembles in New York City. A native of Madrid, Spain, Daniel holds a Masters degree in Classical Guitar Performance from the Cincinnati Conservatory of Music. As a performer, Daniel plays guitar for Argentinean star Coral and Mexican/Middle-Eastern singer Nuriya. He is also adjunct professor of music at Manhattan College, teaches at the Brooklyn Music Factory, and gives private lessons in his Brooklyn studio.

WINE FOR THIS CONCERT GENEROUSLY  
DONATED BY BOTTLES AND CASES

FRIDAY, DECEMBER 18TH, 2015  
AT 6:30 PM

## Elena Urioste & Michael Brown

Elena Urioste, violin, and Michael Brown, piano, recital partners since 2009, have won critical acclaim across the United States and abroad. As a duo they garnered a rave review from *The New York Times* for their Merkin Hall debut in New York City, and have since captivated audiences in recital venues. Acclaimed soloists in their own right, Elena Urioste has been hailed in *The New York Times* for her "stunning performances," and Michael Brown in the same newspaper as "a young piano visionary." Recent recordings by the duo of sonatas by Strauss, Janáček, Fauré, and Ravel have aired on BBC Radio 3.

WINE FOR THIS CONCERT GENEROUSLY  
DONATED BY BOTTLES AND CASES



FRIDAY, JANUARY 22ND, 2016  
AT 6:30 PM

## Joelle & the Pinehurst Trio

Joelle and the Pinehurst Trio came together in 2009 when the members of this classic quartet all lived on Pinehurst Avenue in northern Manhattan. After throwing themselves together to play a wedding in Vermont, they realized that their unique chemistry on and off the bandstand was something to explore further. Now, this versatile ensemble has performed their distinctive brand of "jazzed up pop & popped up jazz" at Lincoln Center, Birdland, Top of the Rock, and many other great venues in NYC and beyond.

WINE FOR THIS CONCERT GENEROUSLY  
DONATED BY EMPIRE MERCHANTS

FRIDAY, FEBRUARY 19TH, 2016  
AT 6:30 PM

## Dolce Vita Strings

Dolce Vita Strings Quartet was formed in 2004. All of its musicians are graduates of prestigious schools like The Juilliard School, Eastman School of Music, National Music Academy of Ukraine, and Manhattan School of Music. As an ensemble they have taken part in festivals throughout Europe with a repertoire of over two hundred pieces. Their philosophy is that music should elevate, inspire and captivate the spirit acoustically and visually.

WINE FOR THIS CONCERT GENEROUSLY  
DONATED BY VINTAGE GRAPES



FRIDAY, MARCH 18TH, 2016  
AT 6:30 PM

## The Blue Vipers of Brooklyn

The Blue Vipers of Brooklyn are an early jazz, swing, and blues band, composed of acoustic guitar/vocals, upright bass, homemade washboard percussion, trumpet and saxophone. Their repertoire of witty songs from the 1920's and 30's, New Orleans & Dixieland, classic Blues, R&B and Western Swing is augmented by original tunes with moving, yet often bawdy lyrics and catchy 4 part vocal harmony.

WINE FOR THIS CONCERT GENEROUSLY  
DONATED BY BARREL GRAPES

## Reservations required

For tickets call or email  
Antigone Zaharakis  
(516) 922-8668  
education@plantingfields.org

For directions visit  
www.plantingfields.org

**Admission**  
\$25 Non-Members  
\$15 Members

## Thank You to our Wine Sponsors

**Greenvale Grapes**  
82 Glen Cove Road  
Greenvale, NY 11548  
(516) 629-6266  
greenvalegrapes.com

**Bottles and Cases**  
99 East Main Street  
Huntington NY 11743  
(631) 423-9463  
bottlesandcases.com

**Bottles and Cases**  
99 East Main Street  
Huntington NY 11743  
(631) 423-9463  
bottlesandcases.com

**Empire Merchants**  
19-50 48th Street  
Astoria, NY 11105  
(800) 834-3546  
empiremerchants.com

**Vintage Grapes**  
999 Port Washington Blvd.  
Port Washington, NY 11050  
(516) 918-9999

**Barrel Grapes**  
1677 Northern Blvd.  
Manhasset, NY 11030  
(516) 304-5950

**Thank You to  
COFFEED**, our new caterer  
for the concert series

PLANTING FIELDS FOUNDATION'S  
**RECENT EVENTS**



**Golf Outing**  
This year marked the 7th annual Champagne Party at Coe Hall and guests came dressed to

**Luncheon Lecture**  
This year marked the 7th annual Champagne Party at Coe Hall and guests came dressed to

**West Side Story**  
This year marked the 7th annual Champagne Party at Coe Hall and guests came dressed to



**Champagne Party**  
This year marked the 7th annual Champagne Party at Coe Hall and guests came dressed to impress in their 80's themed outfits. Big hair and makeup, bright neon colors, high top sneakers, miniskirts and legwarmers danced along to the iconic tunes of this decade. Table favors for each guest included retro style funky sunglasses and mini Rubik's cubes as guest were served hors d'oeuvres and champagne all night long.



JOIN US IN CELEBRATING THE 20TH ANNIVERSARY OF *Champions for Charity*®



THURSDAY, DECEMBER 3 - SUNDAY, DECEMBER 6  
**25% OF YOUR PURCHASES WILL BE DONATED**  
**TO THE PARTICIPATING ORGANIZATIONS OF YOUR CHOICE!**



Help support our organization by doing your holiday shopping at participating Americana Manhasset and select Wheatley Plaza\* stores on Thursday, December 3 to Sunday, December 6 during shopping center hours. Select our organization when registering for your CHAMPION CARD. Champions for Charity® is a holiday shopping benefit where 25% of your full-price pre-tax purchase will be donated to those charities you select. Your purchases are not automatically eligible. Your CHAMPION CARD is required to allocate the donation and MUST be presented at the time of each purchase.

To register for your complimentary CHAMPION CARD and for more information about Champions for Charity® visit [championsforcharity.org](http://championsforcharity.org), call 516.627.2277 or visit Americana Manhasset's Concierge Store.

AMERICANA MANHASSET Prada · Louis Vuitton · Max Mara · Céline · Fendi · Hirshleifer's · Dior · Hermès · Burberry Gucci · Giorgio Armani · Jimmy Choo · alice + olivia · Donna Karan New York · London Jewelers · Christian Louboutin · Bandier Bottega Veneta · London Jeweler's Watch Salon · Zimmermann · Hirshleifer's Shoe Salon · Illori · Tory Burch · Intermix Chanel · Toku Modern Asian Restaurant · Ermenegildo Zegna · Van Cleef & Arpel's · Theory · Coach · Tiffany & Co. Salvatore Ferragamo · David Yurman · TWO by London · Diane von Furstenberg · Bluemercury · Brooks Brothers · Wolford Hugo Boss · Chanel Fine Jewelry · Anne Fontaine · Agent Provocateur · Morgenthau Fredericks · Brunello Cucinelli The Mens Market at Hirshleifers · Leggiadro · Cipollini Trattoria & Bar · Cipollini Pronto Caffè · Sneakerology · Exit 36 Loro Piana · rag & bone · J.Crew · Cartier · Vince · Ralph Lauren · Vince Camuto · St. John · Michael Kors · Vilebrequin

\*Select Wheatley Plaza stores will be participating. Visit [championsforcharity.org](http://championsforcharity.org) for details. Americana Manhasset GiftCards purchased during Champions for Charity® are eligible for a 10% donation. Americana Manhasset GiftCards purchased AND redeemed during Champions for Charity® are eligible for a 25% total donation. Participating store gift certificates and special order merchandise are subject to individual store policy.

AMERICANA MANHASSET  
WHEATLEY PLAZA

COMPLIMENTARY PERSONAL SHOPPING · GIFTCARDS · CONCIERGE  
800.818.6767 · [AMERICANAMANHASSET.COM](http://AMERICANAMANHASSET.COM)

COFFEEED

The Visitors Center café is under new management. Coffeeed will now be serving delicious hot and cold beverages, sandwiches and snacks. They are open seasonally, from 11am to 3pm. 516-922-5926. If you are interested in having an event catered please contact the Cathy Mosomillo at 212-568-5323 or email [cathy@coffeeednyc.com](mailto:cathy@coffeeednyc.com).



MISSION STATEMENT  
Planting Fields Foundation collaborates with the New York State Office of Parks, Recreation and Historic Preservation to preserve and interpret Planting Fields Arboretum State Historic Park as a premier Long Island Gold Coast estate and arboretum by providing educational and enriching experiences.

PLANTING FIELDS  
FOUNDATION STAFF

**Henry B. Joyce**  
*Executive Director*  
Tel: 516-922-0479  
[Henry.Joyce@plantingfields.org](mailto:Henry.Joyce@plantingfields.org)

**Michelle Benes**  
*Membership Coordinator*  
Tel: 516-922-8682  
[Mbenes@plantingfields.org](mailto:Mbenes@plantingfields.org)

**Andrea Crivello**  
*Curatorial Assistant*  
Tel: 516-922-8684  
[Acrivello@plantingfields.org](mailto:Acrivello@plantingfields.org)

**Elsa Eisenberg**  
*Group Tour and Volunteer Coordinator*  
Tel: 516-922-8670  
[Eeisenberg@plantingfields.org](mailto:Eeisenberg@plantingfields.org)

**Laraine Giardina**  
*Finance Manager*  
Tel: 516-922-8672  
[Finance@plantingfields.org](mailto:Finance@plantingfields.org)

**Jennifer Lavella**  
*Director of Marketing and Special Events*  
Tel: 516-922-8678  
[Jlavella@plantingfields.org](mailto:Jlavella@plantingfields.org)

**Lilly McGurk**  
*Development Officer*  
Tel: 516-922-8676  
[Emcgurk@plantingfields.org](mailto:Emcgurk@plantingfields.org)

**Rosemarie Papayanopoulos**  
*Librarian*  
Tel: 516-922-8631

**Antigone Zaharakis**  
*Education Coordinator/Gift Shop Manager*  
Tel: 516-922-8668  
[Education@plantingfields.org](mailto:Education@plantingfields.org)

*Evergreen* is published by  
Planting Fields Foundation.  
Copyright © 2015  
Graphic Design by Amy Herling  
[Macomea@optonline.net](mailto:Macomea@optonline.net)

Planting Fields Foundation  
1395 Planting Fields Road  
P.O. Box 660  
Oyster Bay, NY 11771  
[www.plantingfields.org](http://www.plantingfields.org)  
Tel: 516-922-9210  
Fax: 516-922-9226

