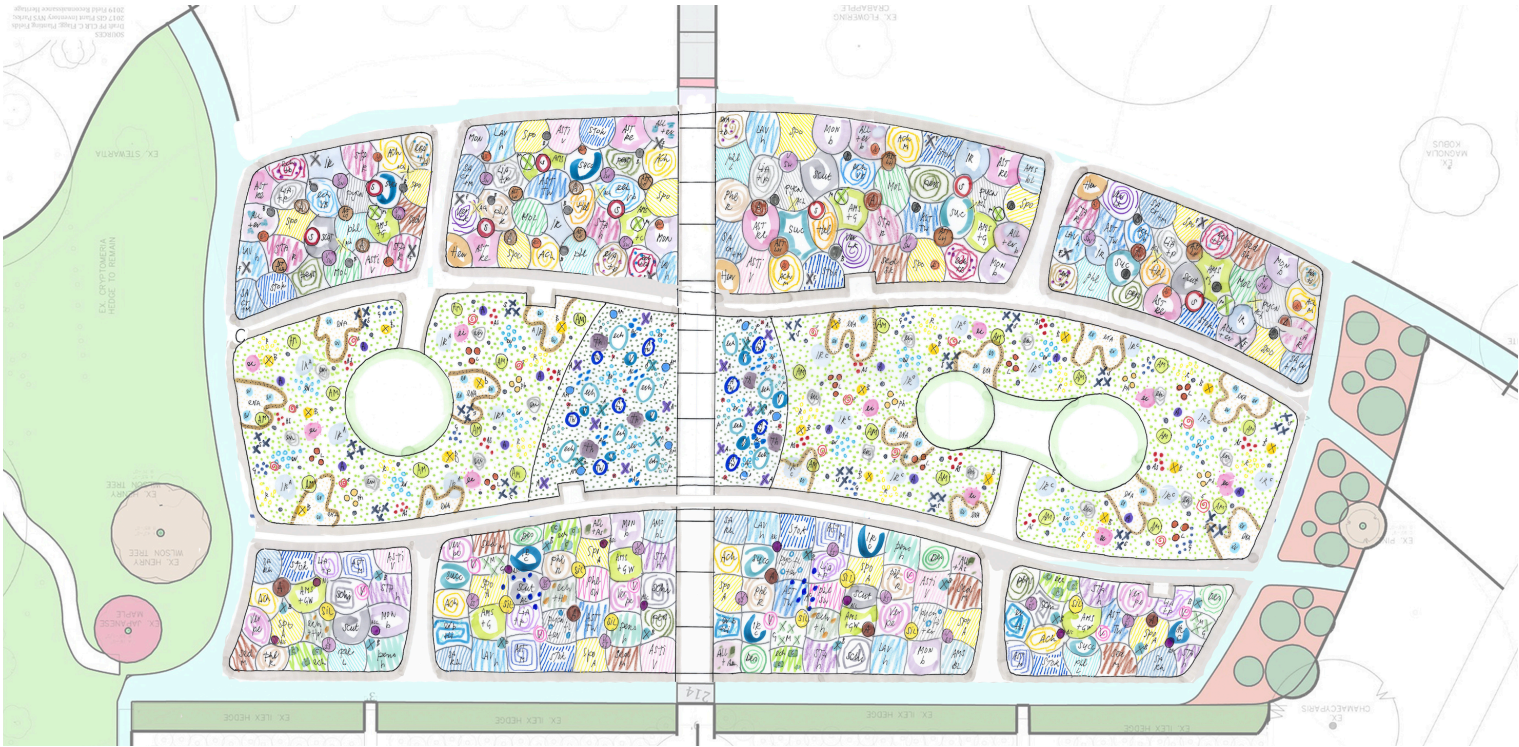


Sponsor a Plant in Piet Oudolf’s Masterpiece at Planting Fields

Leave your mark on Long Island’s most beautiful acre and give a gift that grows with the seasons.



The full planting plan of the Oudolf Garden at Planting Fields by Piet Oudolf, 2025.

Planting Fields Foundation is inviting the public to help bring the Oudolf Garden to life at Planting Fields. Opening in fall 2026, this one-acre garden flanking the historic Rose Arbor will be Long Island’s most beautiful acre – a living work of art that evolves with the seasons, celebrating the resilience, beauty, and rhythm of nature.

Through the Sponsor a Plant program, individuals, families, and organizations can contribute to the garden by sponsoring one of its 24,000 plants. With over 90 species to choose from – each selected by Piet Oudolf for its color, texture, and ecological role – sponsors can dedicate a plant in honor of a loved one, a teacher, or a meaningful moment. Dedications will be recognized online and sponsors will be invited to celebrate the opening of the garden in 2026. Sponsorships of plants are available in the amount of \$25, \$50, and \$100, with the option to support a single plant or multiple varieties.

“This garden is a once-in-a-lifetime gift to our community and to Long Island,” said Dr. Gina J. Wouters, President and CEO of Planting Fields Foundation. “The Oudolf Garden is not just a collection of plants. It is a living canvas that will inspire, teach, and bring people together. By sponsoring a plant, everyone can leave a mark on a space that celebrates nature, artistry, and community – a place that will be cherished for generations.”

The garden is Piet Oudolf’s first public project on Long Island and reflects his visionary approach to landscape design, blending artistry, ecology, and the passage of time. Visitors will experience a garden that transforms with each season, offering moments of reflection, learning, and connection with the natural world.

Additional sponsorship opportunities are available. These include exclusive experiences, on-site recognition, custom volunteer opportunities, and unique ways to engage employees, clients, and communities. Sponsors at this level play a vital role in bringing the garden to life while connecting with a world-class cultural and environmental initiative.

To sponsor a plant or learn more about the Oudolf Garden, [click here](#), visit [www.plantingfields.org](http://www.plantingfields.org), or contact Development Manager, Maddie Schulz, at [mschulz@plantingfields.org](mailto:mschulz@plantingfields.org).

###

About Planting Fields Foundation

Through a balanced approach to preserving and creating, the Foundation stewards the built and natural environment of Planting Fields as a public center of learning and life. Planting Fields is a dynamic and vibrant site that features numerous historic structures, Olmsted Brothers-designed landscapes, and world class art and horticultural collections. Established in 1952 by W.R. Coe as a 501(c)(3), Planting Fields Foundation works in partnership with New York State Office of Parks, Recreation, and Historic Preservation to steward Planting Fields. As a former Gold Coast estate, it is preserved today as a celebration of art, architecture, landscape, and the people that resided on its land. Annual festivals and seasonal 5Ks, as well as year-round programs, lectures, symposia, exhibitions, concerts, performances, and family events take place, ushering in over 200,000 visitors each year. Thousands of school-aged children engage with Planting Fields to learn about the sciences and humanities through varied offerings that are uniquely reflected at the site. Learn more at [plantingfields.org](http://plantingfields.org).

Contact

Kayla Cheshire, Communications and Marketing Manager

[kcheshire@plantingfields.org](mailto:kcheshire@plantingfields.org) 516.922.8690

Planting Fields Foundation

1395 Planting Fields Road

Oyster Bay, NY 11771